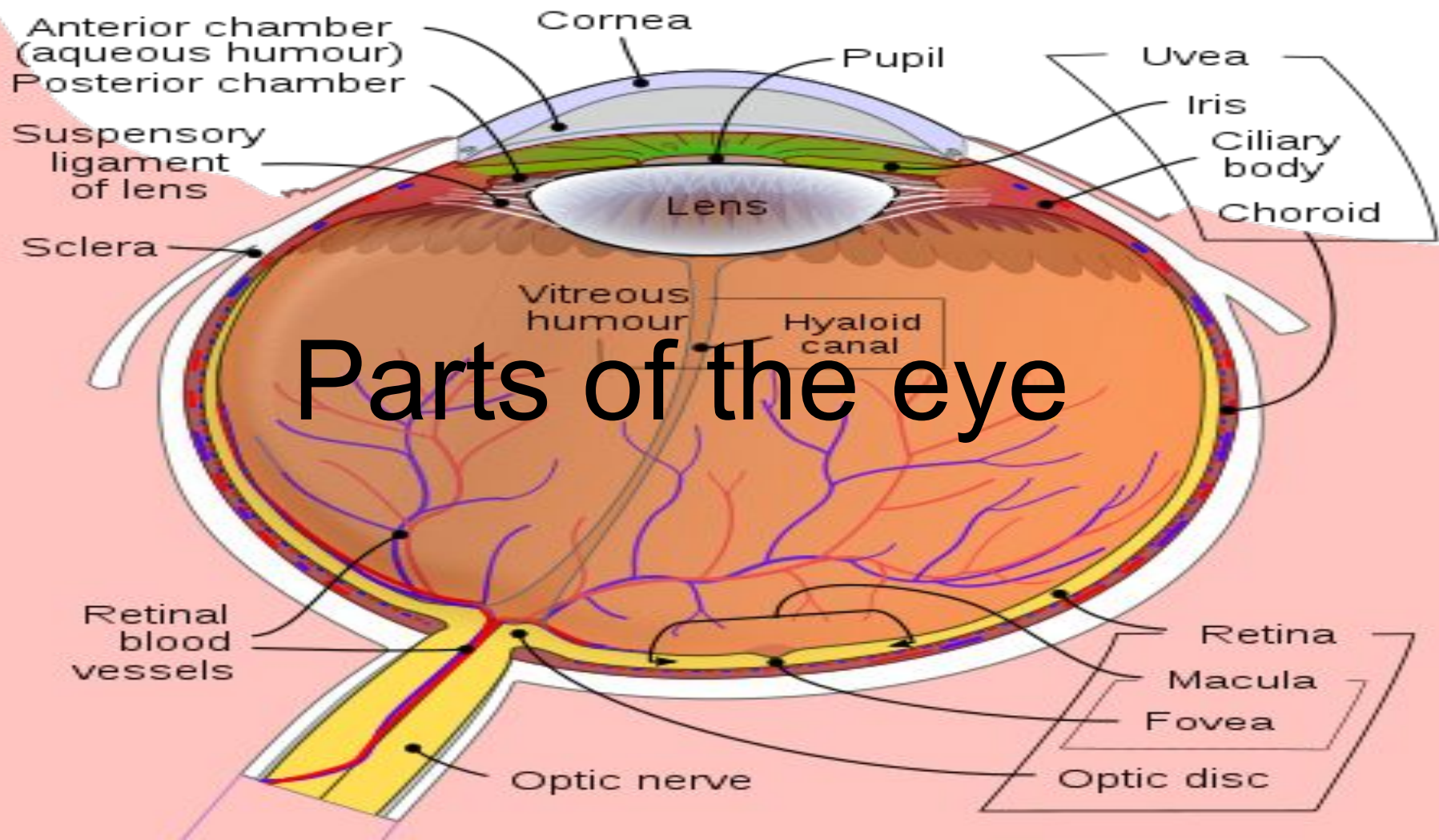


By Daniel,Pola,Sofia&Kira

EYE SIGHT



.1 Did you know that in the light your pupils get smaller and in the dark it is bigger

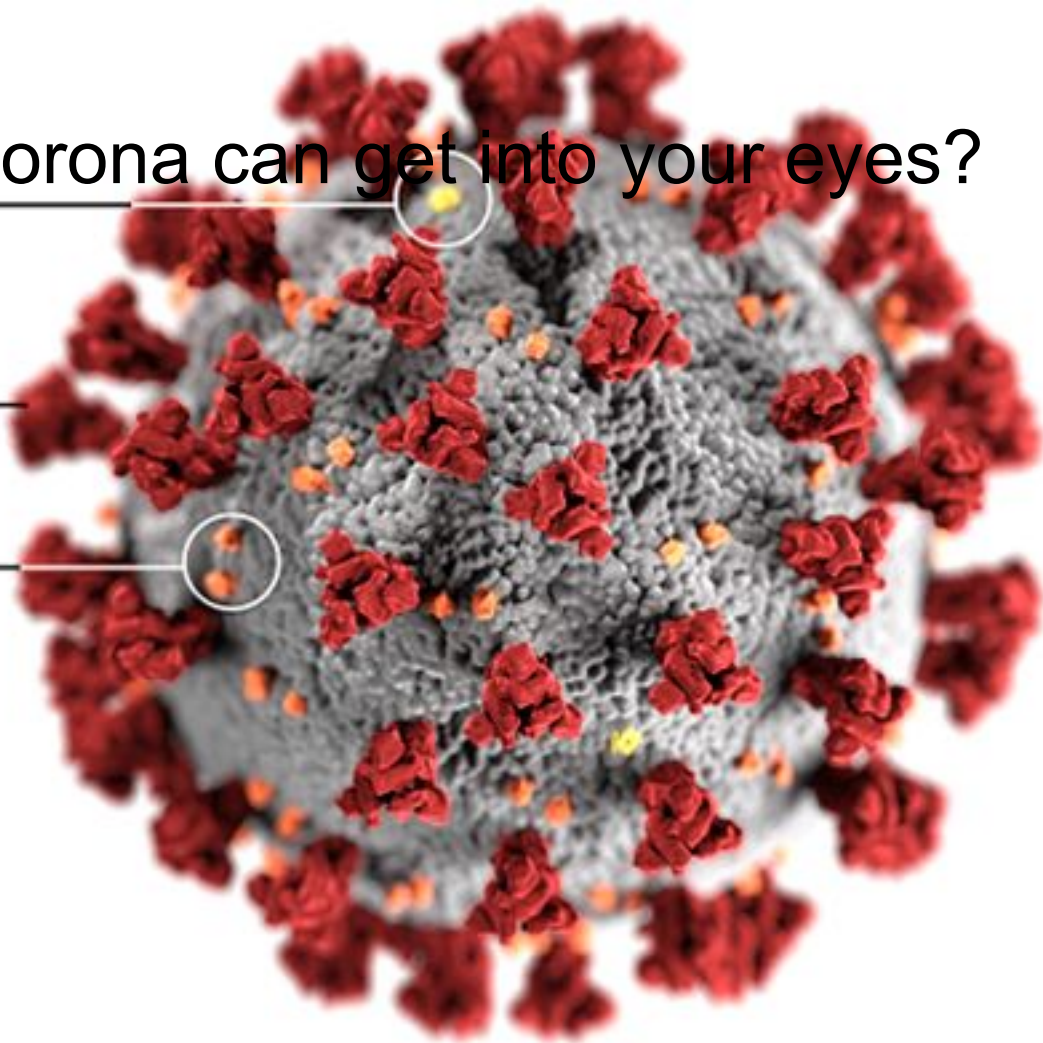
Did you know corona can get into your eyes?

E protein

S protein

M protein

COVID-19





A fundus photograph of a human eye, showing the retina, optic disc, and macula. The image is circular with a reddish-orange hue. The optic disc is visible on the left side, and the macula is on the right. A network of blood vessels is spread across the retina. At the top center, there are three white, triangular shapes pointing downwards, resembling a stylized sun or a decorative element. The text "What do you see?" is written in a cursive font on the left side.

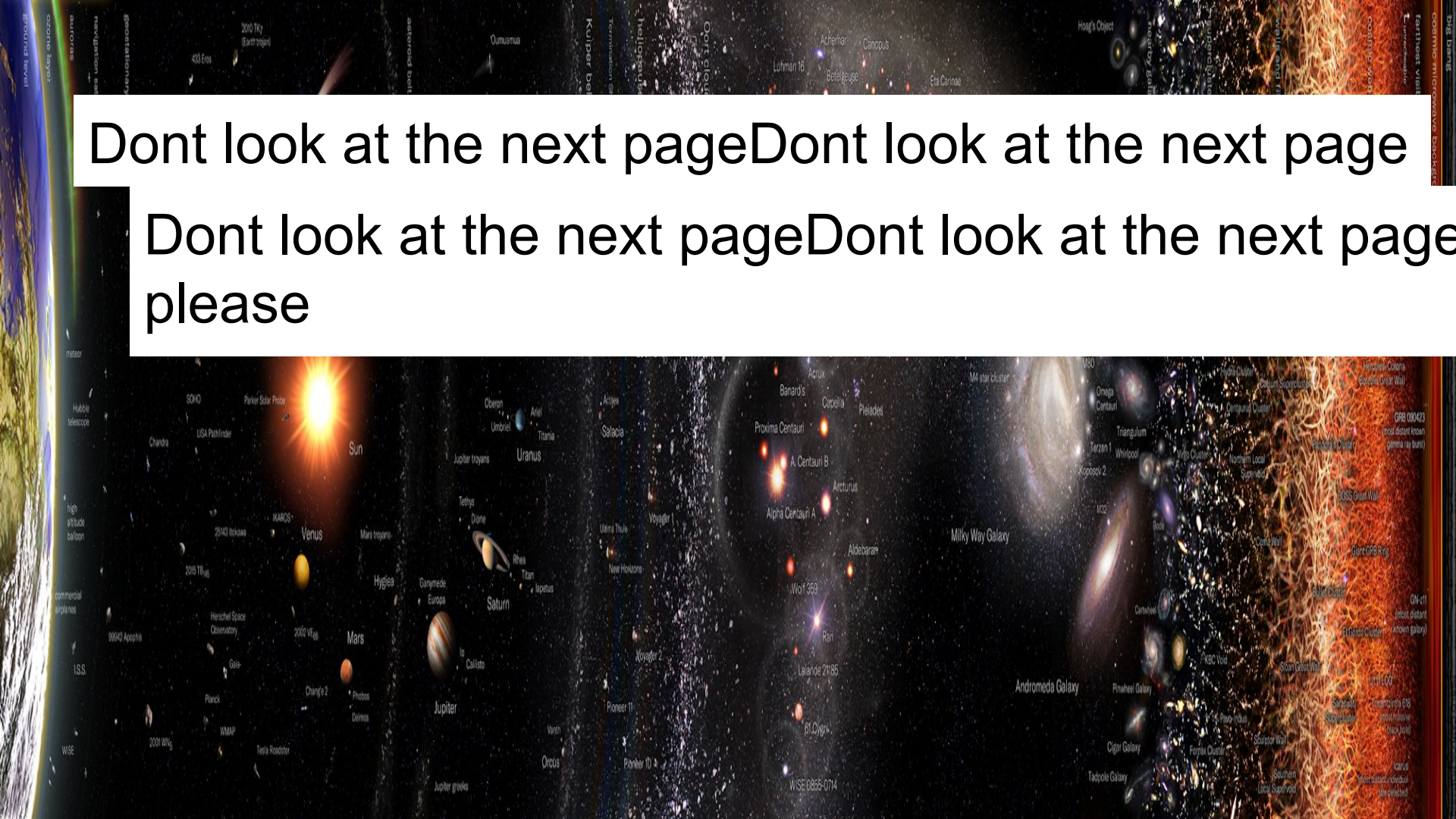
What do you see?

The eye

The real end

Dont look at the next pageDont look at the next page

Dont look at the next pageDont look at the next page
please



Shadow

How are shadows formed ?

- . — when an object is blocking the path of light it will have the exact shape of the object which is known as a shadow. Moon is a source of light. We can see it because reflects light from the sun.

By Pola

Light and shadows

Light is sometimes absorbed or reflected or both!the end.

Starptautiskais Morzes kods

A	• —
B	— • • •
C	— • — •
D	— • •
E	•
F	• • — •
G	— — •
H	• • • •
I	• •
J	• — — —
K	— • —
L	• — • •
M	— —
N	— •
O	— — —
P	• — — •
Q	— — • —
R	• — •
S	• • •
T	—

U	• • —
V	• • • —
W	• — —
X	— • • —
Y	— • — —
Z	— — • •

1	• — — — —
2	• • — — —
3	• • • — —
4	• • • • —
5	• • • • •
6	— • • • •
7	— — • • •
8	— — — • •
9	— — — — •
0	— — — — —

The barrel



Barrelplex



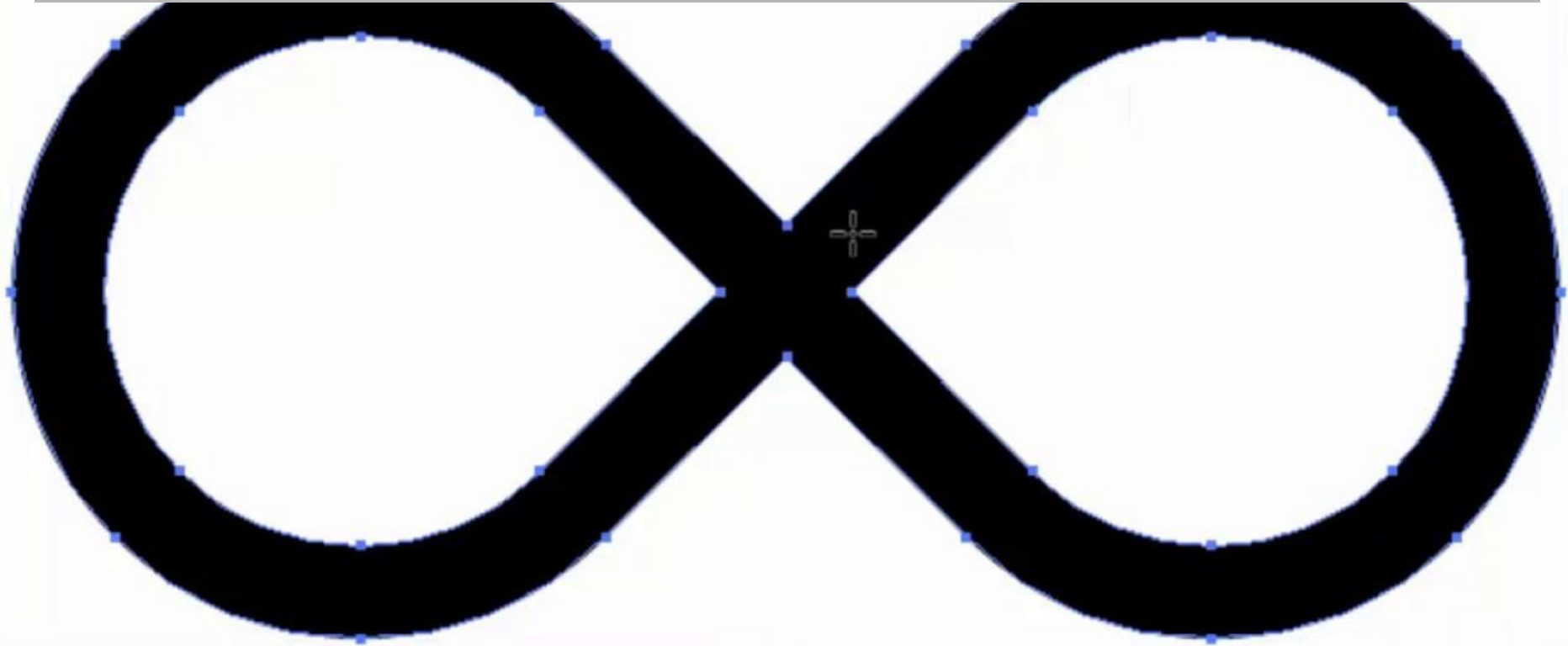
barreplexia



barreplexianth



infinity



The end

Sofia thinks#4
is not true

████

██

██

██

████

████

██

████

████

████

██

██

██

██

██

████

████

██

[illegible]







The end